

Growth and Investigation of $\text{Nd}_{1-x}\text{Sm}_x\text{ScO}_3$ and $\text{Sm}_{1-x}\text{Gd}_x\text{ScO}_3$ Solid-Solution Single Crystals

R. UECKER^a, D. KLIMM^a, R. BERTRAM^a, M. BERNHAGEN^a, I. SCHULZE-JONACK^a,
M. BRÜTZAM^a, A. KWASNIEWSKI^a, TH.M. GESING^b AND D.G. SCHLOM^{c,d}

^aLeibniz Institute for Crystal Growth, Max-Born-Str. 2, D-12489 Berlin, Germany

^bSolid State Chemical Crystallography, Institute for Inorganic Chemistry, University Bremen
Leobener Str./NW2, D-28359 Bremen, Germany

^cDepartment of Materials Science and Engineering, 230 Bard Hall, Cornell University, Ithaca
New York 14853-1501, USA

^dKavli Institute at Cornell for Nanoscale Science, Ithaca, New York, 14853, USA

The pseudo-cubic lattice parameters of rare-earth (RE) scandate, REScO_3 , single crystals grown by the Czochralski technique with $\text{RE} = \text{Dy}$ to Pr lie between about 3.95 and 4.02 Å. These crystals are the only available perovskite substrates in this lattice constant range that can withstand virtually any thin film growth conditions. Two members of this series, PmScO_3 and EuScO_3 , are, however, not suitable for substrate applications. Because the pseudo-cubic lattice parameters between neighbouring REScO_3 compounds decrease with rising atomic number of the RE in about 0.01 Å steps, the unsuitability of PmScO_3 (radioactivity) and EuScO_3 (incompatibility with Si) causes an interruption in this lattice spacing sequence. To replace them, solid solutions of their adjacent rare-earth scandates, i.e., $(\text{Nd}_{0.5}\text{Sm}_{0.5})\text{ScO}_3$ and $(\text{Sm}_{0.5}\text{Gd}_{0.5})\text{ScO}_3$, were grown by the Czochralski method. Their average pseudo-cubic lattice parameters of 3.9979 Å and 3.9784 Å are very close to those of PmScO_3 and EuScO_3 , respectively, and they show very low segregation. These qualities make these solid solutions excellent substitutes for PmScO_3 and EuScO_3 .

DOI: [10.12693/APhysPolA.124.295](https://doi.org/10.12693/APhysPolA.124.295)

PACS: 64.75.Nx, 81.10.Fq, 81.30.-t

1. Introduction

Over the past decade perovskite type rare-earth (RE) scandate single crystals REScO_3 with $\text{RE} = \text{Dy}-\text{Pr}$ have become widely used substrates for the growth of perovskite thin films [1–3]. These REScO_3 substrates have pseudo-cubic lattice parameters covering the range between 3.95 and 4.02 Å. The only other perovskite substrate with a lattice parameter in this range is KTaO_3 (3.989 Å). An issue with KTaO_3 , however, is that it can only be grown in small dimensions from self-fluxes [4] and tends to dissociate under typical growth conditions used for the growth of perovskite thin films (substrate temperatures $\approx 750^\circ\text{C}$) due to potassium evaporation [5]. Following Goldschmidt's tolerance factor rule [6] only RE scandates between HoScO_3 and LaScO_3 exhibit the perovskite type structure [7], i.e., they are isomorphous. The orthorhombic structure of these RE scandates (standard setting space group $Pnma$, no. 62) is a distorted derivative of the cubic perovskite structure, where the RE occupy the eightfold coordinated A sites and Sc the centres of the $[\text{ScO}_6]$ octahedra (Fig. 6, inset). The unit cell contains four formula units [7].

The crystals ranging from DyScO_3 to PrScO_3 are grown by the conventional Czochralski technique [8, 9]. The most recent member to be grown as a single crystal, PrScO_3 [10], is the one with the highest melting temperature. Of the missing RE scandates, CeScO_3 and LaScO_3 (the largest RE scandates) cannot be grown by the con-

ventional Czochralski method due to their exceptionally high melting temperatures [11] exceeding the maximum load of an iridium crucible, which is about 2250°C . The smallest RE scandate, HoScO_3 , cannot be prepared because it is not a stable phase at its melting point. In the vicinity of its melting temperature the stable polymorph of HoScO_3 has the fluorite structure. Only about 200°C below its melting point does the perovskite polymorph of HoScO_3 become stable [11, 12]. Additionally, two further members of the above range of RE scandates are problematic as substrates for the growth of thin films: (1) PmScO_3 because it is radioactive and (2) EuScO_3 , which due to the multivalent nature of Eu is thermodynamically unstable in direct contact with silicon [13]. Because the pseudo-cubic lattice parameters of the RE scandates neighbouring PmScO_3 and EuScO_3 differ from them by about 0.01 Å, the lack of single crystal substrates of these compounds results in an interruption of the lattice parameters continuity, i.e., the set of RE scandate substrate crystals which could enable strain engineering of perovskite thin films in regular 0.01 Å steps is incomplete (Fig. 1).

In the present report we investigated whether solid solutions (SSLs) utilizing REs adjacent to these missing RE scandates can be grown, i.e., whether PmScO_3 could be replaced by a NdScO_3 – SmScO_3 SSL and EuScO_3 by a SmScO_3 – GdScO_3 SSL. Based on Vegard's rule both solid solutions should have nearly the same lattice parameters as the material replaced if prepared in a 1:1

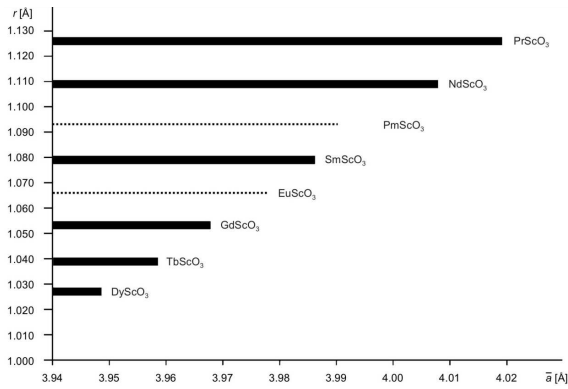


Fig. 1. Relation between ionic radii of the RE ions in eightfold coordination (r) [14] and the pseudo-cubic lattice parameter (\bar{a}) of the corresponding RE scandates. The pseudo-cubic lattice constant of PmScO₃ is calculated from the data in Weigel and Scherer [15].

molar composition ratio. Provided segregation is minimal, such solid solutions could be valuable substitutes for PmScO₃ and EuScO₃ single crystal substrates, enabling strain engineering of thin films grown upon them.

Because all RE nearest neighbours in the range DyScO₃–PrScO₃ have isomorphous crystal structures and their corresponding atoms have similar ionic radii, the only missing precondition for the possibility to grow solid solutions is the question of congruent melting of the end members. DyScO₃, GdScO₃, SmScO₃, NdScO₃, and LaScO₃ were reported to melt congruently [11]; our DTA measurements on TbScO₃ and PrScO₃ show that both compounds also melt congruently at 2095 °C and 2197 °C, respectively.

If the formation of solid solutions between all nearest neighbours in the range Dy–Pr is possible, a route to continuous strain engineering of perovskite thin films and fine-tuning of film properties could be opened.

2. Experimental

2.1. Crystal growth

The starting oxides were of a minimum of 99.99% purity. To prepare the starting melt the powders were dried, mixed according to the formula Sm_{0.5}Gd_{0.5}ScO₃ and Nd_{0.5}Sm_{0.5}ScO₃, sintered at 900–1100 °C, and finally isostatically pressed.

The crystals were grown by the conventional Czochralski technique with RF-induction heating (25 kW generator) and automatic diameter control. Because of the high melting temperatures of the RE scandates, iridium crucibles with an active afterheater must be used. The crucible dimensions were 40 mm in diameter and height; the afterheater was of the same diameter and 80 mm in height. To suppress the frequently observed spiral formation of several RE scandates, a conical baffle was placed directly on the crucible [8]. Thermal insulation was provided by an outer alumina ceramic tube filled

with zirconia felt and granules. The crystals were grown under flowing nitrogen or argon. To grow NdScO₃–SmScO₃ and SmScO₃–GdScO₃ SSLs, a seed crystal from the RE scandate end member with the higher melting point was used. In the case of Sm_{0.5}Gd_{0.5}ScO₃ the pulling rate was 1.0 mm h^{−1} and the rotation rate was 10 rpm. Nd_{0.5}Sm_{0.5}ScO₃ was grown with a pulling rate of 0.5 mm h^{−1} and a rotation rate of 15 rpm. Both solid solutions were grown along the [101] direction to enable efficient preparation of (101) substrates. The rectangular surface mesh of the (101) plane (which corresponds to a pseudo-cubic (100) surface) is preferred for the epitaxy of (100)-oriented pseudo-cubic perovskite thin films.

2.2. Crystal characterization

2.2.1. Crystal composition

The chemical composition of the crystals was investigated with an inductively coupled plasma — optical emission spectrometer (ICP-OES) IRIS Intrepid HR Duo. The samples were prepared by microwave digestion with HNO₃ (240 °C, 20 min).

2.2.2. Melting behaviour, melting point and heat of fusion

Differential thermal analysis (DTA) was performed with a NETZSCH STA429, where a tungsten mesh heater in a 99.9999% pure He atmosphere allows measurements up to 2400 °C with a heating rate of 15 K/min. Typical samples consisted of 20–50 mg of crushed pieces from the grown REScO₃ single crystals. Prior measurements indicate that the congruently melting composition of all RE scandates investigated to date occur at RE:Sc ratios slightly smaller than unity [9]. In addition to pure GdScO₃, SmScO₃, and NdSmO₃ compounds, several mixtures of GdScO₃–SmScO₃ and NdScO₃–SmScO₃ were also measured. The samples were placed in tungsten crucibles with lids.

The temperatures in the DTA were measured with W/Re thermocouples. The indicated temperature was observed to drift at the very high temperatures ($T > 2000$ °C) used in the present study. This drift was accounted for by occasional measurements of Al₂O₃ as a reference material with known melting point and heat of fusion ($T_f = 2054$ °C, $\Delta H_f = 118.4$ kJ/mol) [16]. The temperature error in the range beyond 2000 °C was estimated to be ± 15 K.

2.2.3. Lattice parameters

The lattice parameters of the solid solutions were calculated from X-ray powder diffraction data measured with a Seiffert UDR6 diffractometer (Cu K_α radiation; 2θ range 20°–70°).

3. Results

3.1. Grown solid solutions

Two examples of the solid solutions grown by the Czochralski method are shown in Fig. 2.

The cylindrical Sm_{0.5}Gd_{0.5}ScO₃ crystal was about 17 mm in diameter and 40 mm in length (Fig. 2, top). At



Fig. 2. $Sm_{0.5}Gd_{0.5}ScO_3$ (top) and $Nd_{0.5}Sm_{0.5}ScO_3$ (bottom) solid-solution single crystals.

the tail end of the crystal the beginning of spiral formation can be seen. The colour of the crystal is determined by the colour of the trivalent RE ions, i.e., the colourless $GdScO_3$ and the yellow $SmScO_3$ lead to the yellow colour of this solid solution.

The diameter of the $Nd_{0.5}Sm_{0.5}ScO_3$ crystal was about 18 mm and its cylindrical length was about 50 mm (Fig. 2, bottom). Here the violet colour of $NdScO_3$ and the yellow colour of $SmScO_3$ led to a brownish colour of the solid solution.

Both solid solutions form four facets at the periphery: the $(12\bar{1})$, $(\bar{1}21)$, $(1\bar{2}1)$, and $(\bar{1}2\bar{1})$ planes. The corresponding facets have not been observed at the crystal-melt interface.

X-ray rocking curves taken in a triple-axis geometry on a Rigaku SmartLab (utilizing the 220 reflections of Ge monochromator crystals on both the receiving and diffracted side) revealed both solid solutions to have good perfection. The rocking curve full width at half maximum (FWHM) for both solid-solution single crystals was 12 arcsec in ω (Fig. 3).

The dislocation density is about $2 \times 10^4 \text{ cm}^{-2}$. They show neither stress birefringence nor scattering centers.

3.2. Crystal characterization

3.2.1. Chemical composition

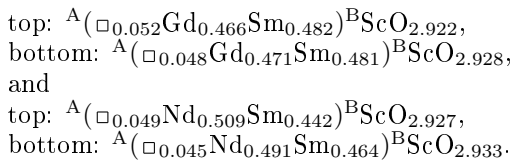
The chemical composition of the crystals measured by inductively coupled plasma-optical emission spectrometry is shown in Table I.

TABLE I

Chemical composition of the solid solution grown from (a) $Gd_{0.5}Sm_{0.5}ScO_3$, (b) $Nd_{0.5}Sm_{0.5}ScO_3$ melt.

(a)						
$Gd_{0.5}Sm_{0.5}ScO_3$	Gd_2O_3 [ma %]	Sm_2O_3 [ma %]	Sc_2O_3 [ma %]	Gd_2O_3 [mol.%]	Sm_2O_3 [mol.%]	Sc_2O_3 [mol.%]
initial melt composition	36.73	35.33	27.94	25	25	50
crystal top	35.53 ± 0.04	35.36 ± 0.04	29.02 ± 0.09	23.92 ± 0.03	24.74 ± 0.03	51.34 ± 0.16
crystal bottom	36.13 ± 0.24	35.47 ± 0.18	29.17 ± 0.12	24.14 ± 0.16	24.64 ± 0.13	51.23 ± 0.21
(b)						
$Nd_{0.5}Sm_{0.5}ScO_3$	Nd_2O_3 [ma %]	Sm_2O_3 [ma %]	Sc_2O_3 [ma %]	Nd_2O_3 [mol.%]	Sm_2O_3 [mol.%]	Sc_2O_3 [mol.%]
initial melt composition	35.01	36.29	28.70	25	25	50
crystal top	36.69 ± 0.09	33.08 ± 0.07	29.56 ± 0.04	26.07 ± 0.06	22.68 ± 0.05	51.25 ± 0.07
crystal bottom	35.74 ± 0.02	35.03 ± 0.02	29.83 ± 0.04	25.11 ± 0.01	23.75 ± 0.01	51.14 ± 0.07

On the basis of the site occupancy refinements of the RE scandate single crystals which shows a RE-deficiency on the A-site and O-vacancies on the oxygen position [17] the final crystallochemical formula of both solid solutions can be written as



3.2.2. Thermal analysis and phase diagrams

Although reliable ΔH_f measurements are not possible when using a DTA sample carrier, we estimated ΔH_f with an accuracy of about 20% by comparing the melting peak areas of the RE scandates with that of Al_2O_3 . An almost ideal behaviour of both the liquid (melt) phase and of the solid solutions are expected because the corresponding quasi-binary partners Gd/Sm and Nd/Sm are always second-nearest neighbours in the RE series and the phase equilibria were investigated at very high T (exceeding $2000^\circ C$). In this case, the solidus and liquidus

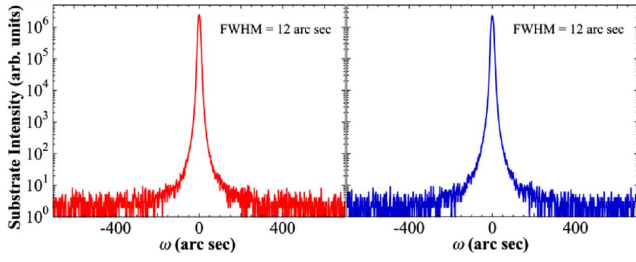


Fig. 3. Rocking curves of the $\text{Gd}_{0.5}\text{Sm}_{0.5}\text{ScO}_3$ 220 peak (left) and the $\text{Nd}_{0.5}\text{Sm}_{0.5}\text{ScO}_3$ 220 peak (right). Both have FWHM of 12 arcsec (0.0033°).

of the systems can be calculated with the Schröder–van-Laar Eq. (1)

$$x^{\text{sol}} = \frac{\exp(a) - 1}{\exp(a) - \exp(b)},$$

$$x^{\text{liq}} = \exp(b)x^{\text{sol}}, \quad (1)$$

where

$$a, b = \frac{\Delta H_f}{R} \left(\frac{1}{T} - \frac{1}{T_f} \right)$$

for both components from the experimental data measured for both components (Table II) [18].

TABLE II

Melting points (error ± 15 K) and heat of fusion (error estimated to 20%) as determined by DTA measurements for the pure REScO_3 end members of this study.

	T_f [K]	ΔH_f [kJ/mol]
GdScO_3	2423	85
SmScO_3	2440	105
NdScO_3	2491	89.2

TABLE III

Segregation during the growth of $\text{Gd}_{0.5}\text{Sm}_{0.5}\text{ScO}_3$ and $\text{Nd}_{0.5}\text{Sm}_{0.5}\text{ScO}_3$ SSLs.

Melt comp.	Crystal	
	Top	Bottom
$\text{Gd}_{0.5}\text{Sm}_{0.5}\text{ScO}_3$	$\text{Gd}_{0.492}\text{Sm}_{0.508}\text{ScO}_3$	$\text{Gd}_{0.495}\text{Sm}_{0.505}\text{ScO}_3$
$\text{Nd}_{0.5}\text{Sm}_{0.5}\text{ScO}_3$	$\text{Nd}_{0.535}\text{Sm}_{0.465}\text{ScO}_3$	$\text{Nd}_{0.514}\text{Sm}_{0.486}\text{ScO}_3$

The resulting liquidus and solidus are shown in the phase diagrams in Fig. 4.

Figure 4 compares the liquidus and solidus lines that are given by Eq. (1) with experimental points (DTA melting peak onsets) that were obtained for several compositions within both systems.

It is obvious that the simplified model of ideal solutions for liquid and solid phases ($\text{Gd}_{1-x}\text{Sm}_x$) ScO_3 and ($\text{Nd}_{1-x}\text{Sm}_x$) ScO_3 describes the DTA results reasonably. It turns out that the 2-phase region (liquid + solid) is narrow in both cases — especially for the Gd–Sm system where the melting points differ less than in the Nd–Sm system (17 K or 51 K, respectively). Also the compa-

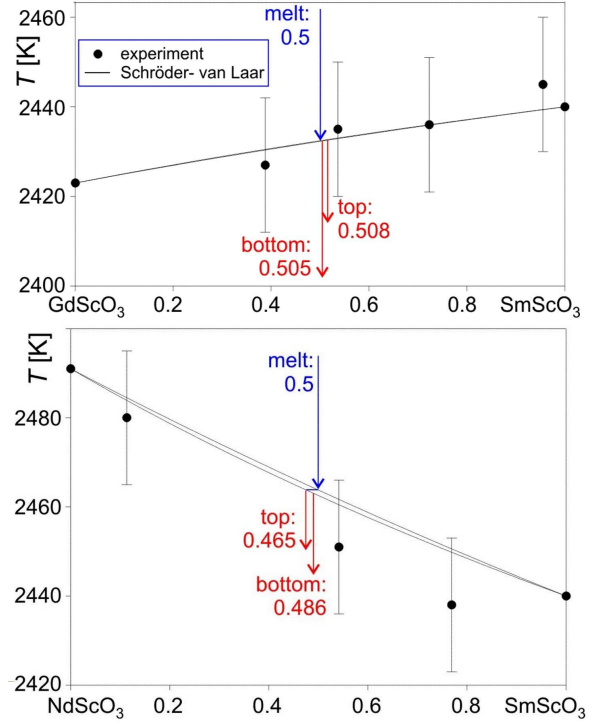


Fig. 4. Experimental phase diagrams GdScO_3 – SmScO_3 (top) and NdScO_3 – SmScO_3 (bottom) as derived from DTA melting peak onsets compared with theoretical liquidus and solidus curves calculated from T_f and ΔH_f . The arrow labels refer to the crystal growth data in Table III.

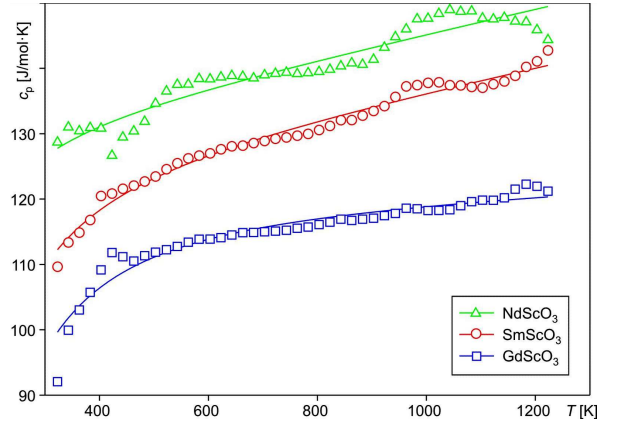


Fig. 5. Specific heat capacity functions $c_p(T)$ obtained by dynamic DSC (symbols), together with fitted functions $c_p = a + bT + c/T^2$ (T in K). For parameters see Table IV.

rably small ΔH_f values given in Table II contribute to the tightness, which is responsible for the low segregation that is observed during Czochralski crystal growth of both systems at intermediate compositions $x = 0.5$ (Table III). As expected, the minor segregation leads always to a pronounced crystallization of the higher melt-

TABLE IV

Parameters of the specific heat capacity functions $c_p(T) = a + bT + c/T^2$ of the three rare earth scandates used in this study with T in K and c_p in J/(mol K).

Crystal	a	b	c
NdScO ₃	127.00	0.0187	-5.497409×10^{-5}
SmScO ₃	119.99	0.0175	-1.397454×10^{-6}
GdScO ₃	116.86	3.8854×10^{-3}	-1.927588×10^{-6}

ing component at the top of the growing crystal, leaving a slightly depleted melt. The segregation reaches a maximum value 3.5% in the Nd–Sm system, as the 2-phase region is there somewhat broader when compared with the Gd–Sm system.

The specific heat capacity $c_p(T)$ of pure single crystals (60–110 mg) was measured twice with dynamic DSC in a NETZSCH STA 449C “Jupiter”, using a DSC- c_p sample holder and platinum crucibles with lids. The measurements were performed according to ASTM E1269, in oxygen flow with a sapphire disc as a standard and a heat-

ing rate of 20 K/min. The results are shown in Fig. 5, and fit parameters for the $c_p(T)$ functions are given in Table IV. It should be noted that heat flow calorimetry does not reach the high accuracy that is obtained, e.g., with drop-in calorimeters. The data shown in Fig. 5 are the smoothed average of two subsequent measurements, and these subsequent runs differed typically by 2%. The total error in these measurements, however, is estimated to be around 10%.

3.2.3. Lattice parameters

Due to the low segregation, the composition of crystal top and bottom of both SSLs differs by less than 2 mol.%, i.e., the lattice parameters vary only very little over the crystal length. While investigating the SSLs, the lattice parameters of all RE scandate single crystals were calculated from X-ray powder diffraction data and are given in Table V. These data are of basic interest for epitaxy.

A comparison of the lattice parameters of both SSLs and the RE scandates that were targeted to replace (EuScO₃ and PmScO₃) is shown in Table VI.

TABLE V

Orthorhombic and pseudo-cubic lattice parameters of the RE scandates that have been grown in single crystal form, including the SSLs Sm_{0.48}Nd_{0.52}ScO₃ and Gd_{0.49}Sm_{0.51}ScO₃ (RE = REScO₃).

RE	Orthorhombic lattice parameters [Å]						Pseudo-cubic lattice parameters [Å]		
	a	b	c	da	db	dc	$0.5\sqrt{a^2 + b^2}$	$b/2$	\bar{a}_{pc}
Pr	5.7797863	8.0244991	5.6066875	0.0000533	0.0000798	0.0000529	4.0262	4.0123	4.0193
Nd	5.7761026	8.0033835	5.5761705	0.0000495	0.0000721	0.0000491	4.0143	4.0017	4.0080
Sm, Nd	5.7685143	7.9843447	5.5537820	0.0000571	0.0000852	0.0000575	4.0038	3.9922	3.9980
Sm	5.7586120	7.9627969	5.5279832	0.0000530	0.0000795	0.0000532	3.9912	3.9814	3.9863
Gd, Sm	5.7543952	7.9490397	5.5065474	0.0000538	0.0000776	0.0000539	3.9823	3.9745	3.9784
Gd	5.7454058	7.9314013	5.4805002	0.0000551	0.0000834	0.0000551	3.9701	3.9657	3.9678
Tb	5.7299335	7.9164596	5.4638353	0.0000445	0.0000639	0.0000444	3.9587	3.9583	3.9585
Dy	5.7163901	7.9031349	5.4400236	0.0000414	0.0000628	0.0000406	3.9456	3.9516	3.9486

TABLE VI

Orthorhombic and pseudo-cubic lattice parameters of EuScO₃ and PmScO₃ compared with the substituting RE scandate solid solutions.

RE scandate	Orthorhombic lattice parameters [Å]			Pseudo-cubic lattice parameters [Å]		
	a	b	c	$0.5\sqrt{a^2 + b^2}$	$b/2$	\bar{a}_{pc}
Gd _{0.49} Sm _{0.51} ScO ₃	5.7544	7.9490	5.5065	3.9823	3.9745	3.9784
EuScO ₃	5.7541	7.9474	5.5063	3.9821	3.9737	3.9779
Sm _{0.48} Nd _{0.52} ScO ₃	5.7685	7.9843	5.5538	4.0038	3.9922	3.9980
PmScO ₃ [15]	5.79	7.94	5.56	4.01	3.97	3.99

As can be seen from Table VI, the average pseudo-cubic lattice parameter \bar{a}_{pc} of Gd_{0.49}Sm_{0.51}ScO₃ matches very well with the one of EuScO₃, while that of Sm_{0.48}Nd_{0.52}ScO₃ is not so close to the value determined from the published data for PmScO₃ [15].

In Fig. 6 the dependence of the orthorhombic lattice parameter of all grown RE scandates including both SSLs

on the ionic radii of the RE ions (RE³⁺ in eightfold coordination) is shown.

As seen in Fig. 6 the orthorhombic lattice parameters of the RE scandates depend directly on the ionic radii of the RE elements. It also can be seen in Fig. 6, however, that the lattice parameters of Sm_{0.48}Nd_{0.52}ScO₃ fit this dependence much better than those of PmScO₃. This is

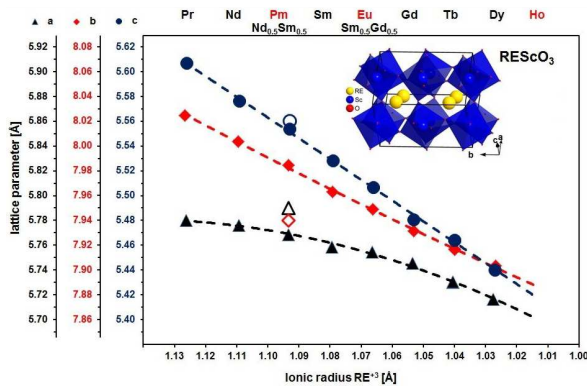


Fig. 6. Dependence of the orthorhombic lattice parameters of the RE scandates on the ionic radii of the relevant RE ions in eightfold coordination (RE^{3+}) [14] (the empty symbols correspond to the lattice parameters of PmScO_3 determined from the published data [15]).

probably due to the low accuracy of the lattice constant estimation of PmScO_3 (PDF 033-1091, quality: B).

4. Conclusions

In order to replace EuScO_3 and PmScO_3 , which have drawbacks for substrate applications for perovskite thin films compared to the surrounding RE scandates between DyScO_3 and PrScO_3 , solid solutions of their adjacent rare-earth scandates were grown by the Czochralski method. To achieve this goal the phase diagrams of the systems $\text{GdScO}_3\text{--SmScO}_3$ and $\text{SmScO}_3\text{--NdScO}_3$ were determined by thermodynamic calculations and DTA measurements. Both systems show complete solubility and very low segregation. Additionally, the specific heat capacity of the pure single crystals was determined. The lattice parameters of $\text{Gd}_{0.49}\text{Sm}_{0.51}\text{ScO}_3$ and $\text{Sm}_{0.48}\text{Nd}_{0.52}\text{ScO}_3$ make them suitable substitutes for EuScO_3 and PmScO_3 substrates.

Based on these results it is expected that solid solutions between all neighbouring RE scandates can be formed, thus enabling substrates with continuously adjustable lattice parameters over the range of pseudo-cubic perovskite lattice spacings between 3.95 and 4.02 Å.

Acknowledgments

The authors are very grateful to Che-Hui Lee at Cornell University for the triple-crystal X-ray diffraction measurements.

References

- [1] K.J. Choi, M. Biegalski, Y.L. Li, A. Sharan, J. Schubert, R. Uecker, P. Reiche, L.-Q. Chen, V. Gopalan, D.G. Schlom, C.B. Eom, *Science* **306**, 1005 (2004).
- [2] J.H. Haeni, P. Irvin, W. Chang, R. Uecker, P. Reiche, Y.L. Li, S. Choudhury, W. Tian, M.E. Hawley, B. Craigo, A.K. Tagantsev, X.Q. Pan, S.K. Streiffer, L.Q. Chen, S.W. Kirchoefer, J. Levy, D.G. Schlom, *Nature* **430**, 758 (2004).
- [3] J.H. Lee, L. Fang, E. Vlahos, X. Ke, Y.W. Jung, L.F. Kourkoutis, J.-W. Kim, P.J. Ryan, T. Heeg, M. Roeckerath, V. Goian, M. Bernhagen, R. Uecker, P.C. Hamme, K.M. Rabe, S. Kamba, J. Schubert, J.W. Freeland, D.A. Muller, C.J. Fennie, P.E. Schiffer, V. Gopalan, E. Johnston-Halperin, D.G. Schlom, *Nature* **466**, 954 (2010).
- [4] S. Zlotnik, P.M. Vilarinho, M.E.V. Costa, J.A. Moreira, A. Almeida, *Cryst. Growth Des.* **10**, 3397 (2010).
- [5] H.-M. Christen, L.A. Boatner, J.D. Budai, M.F. Chisholm, L.A. Gea, D.P. Norton, C. Gerber, M. Urbanik, *Appl. Phys. Lett.* **70**, 2147 (1997).
- [6] V.M. Goldschmidt, *Naturwissenschaften* **14**, 477 (1926).
- [7] R.P. Liferovich, R.H. Mitchell, *J. Solid State Chem.* **177**, 2188 (2004).
- [8] R. Uecker, H. Wilke, D.G. Schlom, B. Velickov, P. Reiche, A. Polity, M. Bernhagen, M. Rossberg, *J. Cryst. Growth* **295**, 84 (2006).
- [9] R. Uecker, B. Velickov, D. Klimm, R. Bertram, M. Bernhagen, M. Rabe, M. Albrecht, R. Fornari, D.G. Schlom, *J. Cryst. Growth* **310**, 2549 (2008).
- [10] T.M. Gering, R. Uecker, J.C. Buhl, *Z. Kristallogr. NCS* **224**, 365 (2009).
- [11] J.M. Badie, *Rev. Int. Hautes Temp. Refract., Fr.* **15**, 183 (1978).
- [12] J.M. Badie, M. Foex, *J. Solid State Chem.* **26**, 311 (1978).
- [13] K.J. Hubbard, D.G. Schlom, *J. Mater. Res.* **11**, 2757 (1996).
- [14] R.D. Shannon, *Acta Crystallogr. Sect. A* **32**, 751 (1976).
- [15] F. Weigel, V. Scherer, *Radiochim. Acta* **7**, 50 (1967).
- [16] FactSage 6.3, Thermodynamic software and database, www.factsage.com.
- [17] B. Velickov, V. Kahlenberg, R. Bertram, M. Bernhagen, *Z. Kristallogr. NCS* **222**, 466 (2007).
- [18] P. Paufler, *Phasendiagramme*, Akademie-Verlag, Berlin 1981 (in German).